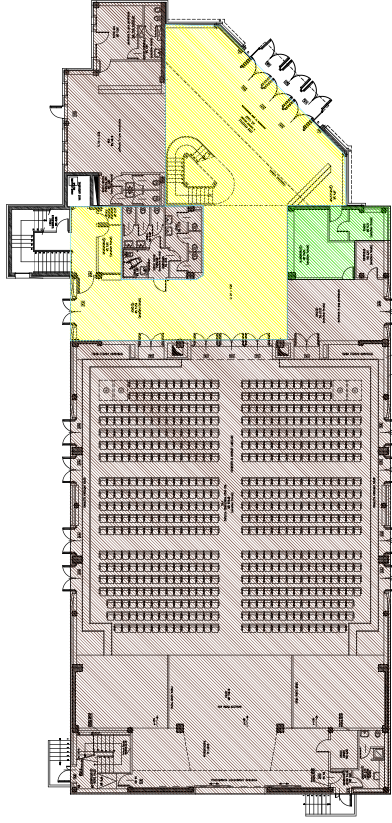
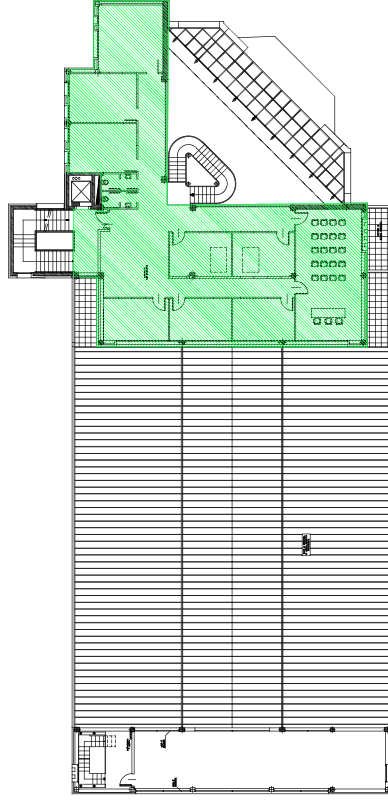


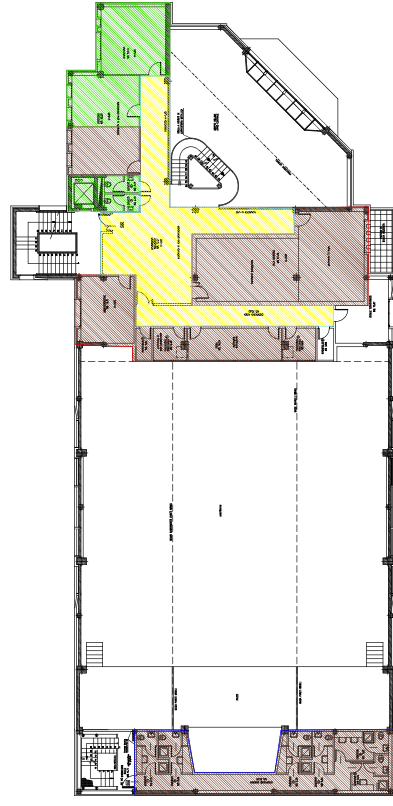
# ALLEGATO A



PANDURERA PT



PANDURERA P2



PANDURERA P1

SUPERFICE TOTALE FABBRICATO: 1960 mq

|         |                |         |       |
|---------|----------------|---------|-------|
| MARRONE | Fondaz. Teatro | 1195 mq | 60.9% |
| VERDE   | Comune         | 415 mq  | 21.1% |
| GIALLO  | Parti comuni   | 350 mq  | 18.0% |