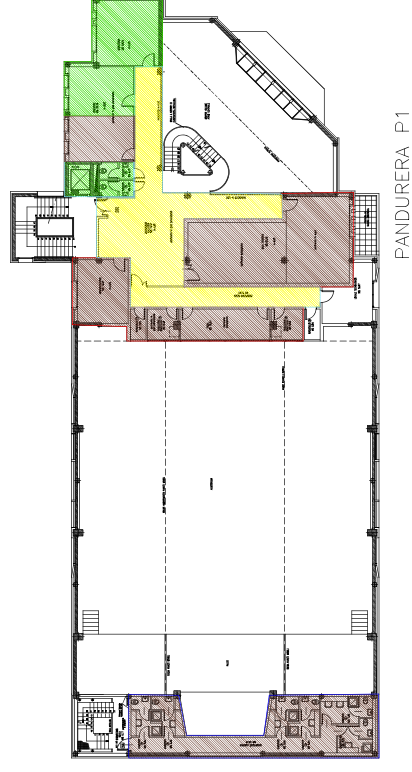
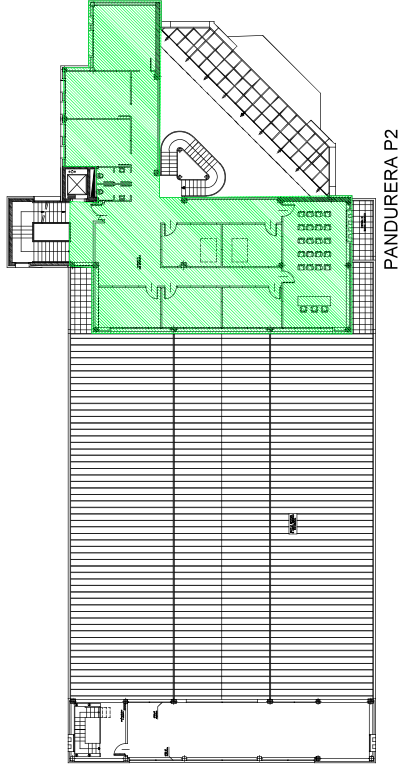
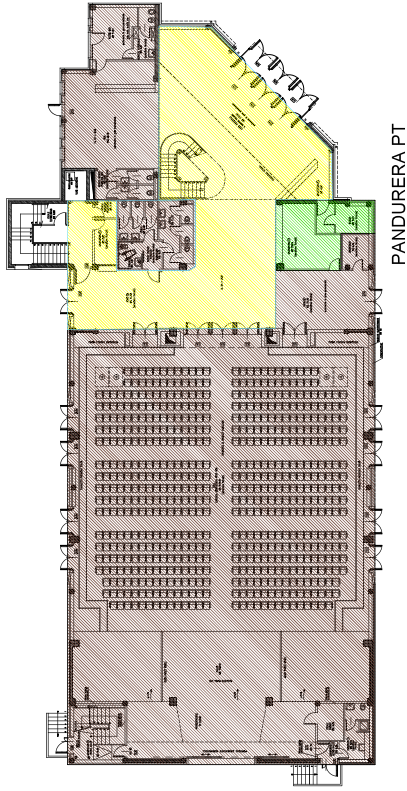


ALLEGATO B



VOLUME TOTALE FABBRICATO: 10880 mc

| | | | |
|----------------|-----------------------|----------------|--------------|
| MARRONE | Fondaz. Teatro | 8585 mc | 78,9% |
| | incidenza percentuale | | |
| VERDE | Comune | 1245 mc | 11,4% |
| | incidenza percentuale | | |
| GIALLO | Parti comuni | 1050 mc | 9,7% |
| | incidenza percentuale | | |